

Why it's Important to Make a Will



Making a Will is the only way to guarantee that your wishes are followed after you are gone and, importantly, it can protect your loved ones. If you don't make a Will, your assets won't automatically go to the people you care about or those you want to benefit; the law will decide what happens to your estate and this could create additional worries for those you thought you had provided for.

How to Leave a Gift in Your Will



If you haven't already made a Will, it is recommended that you hire a solicitor to ensure that all legal procedures are followed. To make it easier and cheaper, it is a good idea to have the following together before your appointment with the solicitor:

- A list of your assets (e.g. house, savings) and liabilities (e.g. mortgage, loans)
- A list of the loved ones and charities you want to remember (including their charity number or other details)
- A note of what type of gift you would like to leave to each of your beneficiaries (e.g. pecuniary, residuary or specific) - see overleaf
- An idea of who you want to appoint as the Executor(s) to your Will (this could be a family member, friend or a professional)

There are different types of legacy that you can leave:

- **Residuary:** This is a gift of the remainder of your assets after all other bequests have been made and any debts cleared.
- **Pecuniary:** This is a gift of a fixed sum of money in your Will.
- **Specific:** This is a particular named item left as a gift in your Will, such as a piece of jewelry, a car or a house.

If you have already made a Will but would like to leave a gift to The Flicka Foundation, you can make a straightforward addition to your existing Will, called a codicil.



Contact Us:

The Flicka Foundation
Penty Noweth Farm
Trenoweth Lane
Mabe Burnthouse
PENRYN
Cornwall
TR10 9JB



Tel: 01326 373601
Email: info@flicka.org.uk
www.flickafoundation.org.uk
Registered Charity: 1153858



Leaving a legacy to Flicka

Make a Difference for Donkeys

The Flicka Foundation is a registered charity, relying solely on the generosity of the public to survive and continue our vital work.



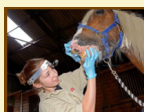
A gift to The Flicka Foundation in your Will, large or small, would make an amazing difference to our work. It will allow us to protect donkeys and horses from abuse and neglect, rescue and rehabilitate victims of cruelty and give them a safe, caring home for life at our sanctuary. Your legacy will also support our essential educational outreach work; giving the donkeys and horses a voice and ensuring generations to come are educated about their plight and their needs.

Here are some of the ways your gift will make a real difference:

£1,000 would cover the initial costs of rescuing a donkey or horse in desperate need



£10,000 will pay the annual cost of farrier care for our equine residents



£25,000 would cover our veterinary costs for a whole year

£35,000 will pay for on-going maintenance of barns and paddocks



£50,000 will allow us to feed over 100 rescued donkeys and horses a balanced diet for a whole year

£100,000 will build a brand new barn and hospital wing to allow us to help more animals



Marybelle's Story...

This is Marybelle.

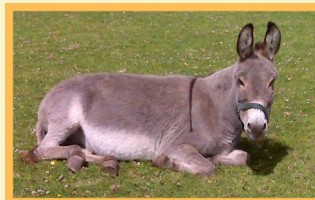


Marybelle was cruelly shipped in from Romania in the back of a filthy lorry, with a foal at foot. **Nothing could have prepared us for the sight of her emaciated, neglected and broken body.** Painfully thin and barely able to stand, her matted coat was full of lice and her feet were deformed and overgrown. She was covered with infected wounds, bruises and scars and had terrible curvature of the spine; her head hung low with utter resignation to her fate. Unbelievably, we were soon to learn she had far worse health issues and, on consultation with vets, we were forced to face the devastating reality that euthanasia might be the kindest option.

But, we decided to give her a chance.

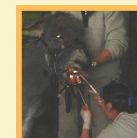
Poor Marybelle desperately tried to eat, but we discovered that her teeth were in a terrible state, leaving her mouth ulcerated and incredibly painful. She required urgent dental work and ongoing treatment from a specialist equine dentist. **Over the days that followed, she became weaker than ever** and spent most days lying in the straw under a heat lamp. We wrapped her up and kept a vigil over her 24/7, hand feeding her to encourage her to eat.

Incredibly, after a week of intensive care, she begun to look brighter and allowed us to help her to her feet for her first look outside. **Lifting her up was easy as she was so light - just a skeleton.** She was still very weak, but seemed to enjoy the sun on her face, so we continued this ritual every day. After another 2 weeks we were ecstatic to watch her finally get to her feet on her own! We continued to help her up each morning, **but Marybelle improved daily.** She put on weight, her ribs became well covered and when we put her out in a small paddock for the first time; **she was so fit that she galloped and bucked and stirred up all the other horses and donkeys!**



Today, Marybelle is quite the character, feisty and full of beans. She has a lovely nature and, despite the misery and pain she has suffered, she adores people. Happily, she now spends her days relaxing and pottering around the paddocks or keeping warm in one of the spacious, cosy barns, with her donkey friends.

The future is bright for Marybelle, but there are many others like her that need our help.



Help us... to Help Them

The Flicka Foundation is a registered charity based in South Cornwall. Founded by Mary Berryman in 1995 following the rescue and care of an elderly pony named Mickey and a neglected strawberry-roan named Flicka, our sanctuary site now provides a safe home for over 100 donkeys and horses, all of which have been rescued from situations of neglect, abuse and abandonment. We have rescued and rehabilitated well over 600 animals since our inception over 20 years ago.